



Farmington, NM
2615 San Juan Boulevard
(505) 327-4947

Lubbock, TX
4529 U.S. 84
(806) 778-0386

Show Low, AZ
1851 North 6th Street
(928) 537-9562

Odessa, TX
1251 OIDC Drive
(432) 332-9630

Chandler, AZ
401 North Alma School Road
(480) 899-1228

Licensed in Arizona, Colorado, Idaho, Montana, Nebraska, Nevada,
New Mexico, Texas, Utah and Wyoming

Cleaning and Specialty



Industrial Vacuum Trucks

A modern fleet of over 30 wet/dry industrial vacuum trucks: Supersucker, Guzzler, and GapVax models. Trailer-mounted units are also available. 18 inch or 27 inch vacuum capacity; 12 - 15 cubic yards carrying capacity.



Hydro-Excavation

Non-mechanical method of excavation. Safely expose and locate buried pipelines, cables, conduit, underground utilities, etc. 33 GapVax units: 5,300 CFM, 15 Cubic yard capacity; 1,200 gallon water tank, 19GPM, 2,900 PSI. 20 ft. extended boom.

Outage & Turnaround Services

Manpower and equipment to perform numerous services under one contract during major outages at power generation plants, refineries, gas processing plants, manufacturing facilities, etc. Portable offices, lighting, truck cranes, bucket trucks, etc.



Hydro blasting & Pressure Washing

All types of high pressure water cleaning: pumps from 15HP to 1,500HP with pressures from 2,500 PSI to 25,000 PSI. Experienced in heat exchangers/tube bundles, finfan coolers, clinker/ash removal, dewatering bins, all storage tanks, pipe/culvert cleaning.



Confined Space & Vessel Entry

Internal cleaning and coating inspection. Trained and certified personnel to open, purge, and monitor air quality, clean residues, and perform visual inspection. Complete safety supervision and cascade air units with SCBA's available.



Abrasive Blasting

Over 100 complete sandblast units from 100 lb. Units to 80,000 lb. Bulk storage and portable units. Experienced in all types of abrasives: Starblast, recyclable steel grit, copper slag, silica sand, coal slag, corncobs, walnut shells, aluminum oxide and glass beads.

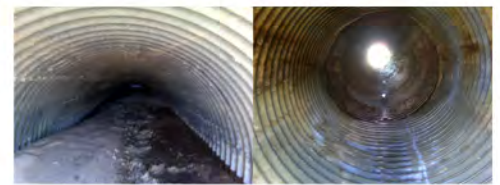
Turbine Oxide Blasting

Experienced with GE, Westinghouse, and ABB rotors, diaphragms, and components. Aluminum oxide blasting media and methods. Facilities include portable blasting tents, dust control/ventilation systems, and shot peening equipment.



Air Preheater High-Pressure Water Washing

Butterworth Jetting Systems. Single cabinet computerized control operation for precise cleaning of Lungstrom and Rothmule preheaters. Customized engineering and operation. Any rotor size. Single or dual direction. Experienced operators.



Culvert & Cattle Guard Cleaning

The GapVax Combo Truck uses a self propelled crawling technology created by the nozzle blast as it penetrates the debris field in the culvert or drain. Cattle guards can be cleaned in minimal time with no damage to cattle guard and road traffic not impacted.



(scan to watch video)



Farmington, NM
2615 San Juan Boulevard
(505) 327-4947

Lubbock, TX
4529 U.S. 84
(806) 778-0386

Show Low, AZ
1851 North 6th Street
(928) 537-9562

Odessa, TX
1251 OIDC Drive
(432) 332-9630

Chandler, AZ
401 North Alma School Road
(480) 899-1228

Licensed in Arizona, Colorado, Idaho, Montana, Nebraska, Nevada,
New Mexico, Texas, Utah and Wyoming

Painting and Coating



Field Applied Painting and Coating

The largest industrial sandblasting, painting, and coating contractor throughout the Southwest and Rocky Mountains. Strict quality control adherence to meet all NACE, SSPC, EPA and OSHA requirements. Storage tanks, structures, unique projects; large or small. Including murals and logos.



Lead Paint Abatement

Trained and experienced personnel to meet with all EPA and OSHA requirements for removal of lead paint from any steel structure. Available for consultation and planning in containment, testing, handling, and disposal.



Pipeline Coating and Reconditioning

Trained and certified personnel to meet all DOT -OPS Operator Qualification requirements to perform sandblasting and coating on pipelines and associated facilities. All work performed in with NACE and SSPC



Plant Applied Painting and Coating

Onsite facilities include 50,000 square feet of enclosed sandblast bays, heated paint shops, force cure facilities, and over 27 acres of outside abrasive blasting, laydown, and storage areas. Large inventory of materials. Easy truck access with large loading/offloading capabilities.



Secondary Containment Systems

Customized spray or trowel-on coating systems to meet your chemical storage needs. All applications meet EPA requirements for containment of accidental spills. Proper surface preparation includes concrete repairs and sealants.



Tank Coatings

We excel at time-line defined comprehensive maintenance plans, ongoing inspections and touchup services on a regularly scheduled basis, long-term warranties - 5 year, 10 year, or other client preferred options, flexible contractor financing - annual or monthly payments, new contractor financed storage tanks, tank moves, elevation changes and major structural repairs. GASB 34 Compliant



Automated Abrasive Blasting with Dust Control

Utilizing the most advanced technology in surface preparation and paint removal, EBE vertical and horizontal blasting units remove existing coatings and prepare surfaces with recyclable steel shot while controlling dust and minimizing waste disposal.



Internal Coating and Linings

All types of coatings and linings: polyureas, epoxies, phenolics, urethanes, coal tars, vinyl esters, etc. Force cure units up to 1 million BTU; ventilation units, diesel and electric, up to 75,000 CFM; state of the art dust suppression systems.

Fireproofing

Qualified and experienced applicators of Carbolite Pyrocrete and Carbolite Intumescent in addition to other products. Work histories include power plants, refineries, chemical plants, hospitals, commercial buildings.